

PRESS RELEASE

Glass + Material Ambition

SEMINAR

Five internationally renowned glass artists share their techniques on combining glass with other materials to add another dimension to their work

Saturday, 25 October 2014

10.30am – 4.30pm

Brockway Room, Conway Hall, Red Lion Square, London WC1R 4RL

SPEAKERS

**Sarah Blood, Kirsty Brooks, Anna Dickinson,
Shirley Eccles, Emma Woffenden**

On 25 October 2014, **Just Glass** will once again be holding its biennial seminar, dedicated to developing the skills and profile of British Studio Glass. As in previous years, glass-makers, collectors, students and indeed anyone with an interest in the creation of studio glass is invited to join **Just Glass** to hear some of the country's most innovative glass artists share their skills and experiences of breaking boundaries by combining glass with a range of other materials. Hear Sarah Blood talk about her use of inert gases with glass and mixed media to create her work, and Kirsty Brooks explain digital manipulation and application of images to her architectural glass. Anna Dickinson will talk about how she incorporates metal with glass, exploring the use of cast and blown pieces, while Shirley Eccles will reveal her approach to using found objects in wood, metal or stone with glass. Making works that explore the power of myth, Emma Woffenden will discuss how she uses a variety of materials combined with glass to create challenging sculptures and installations. All these artists share a strong drive to explore and to respond to their environment and true material ambition.



Luna Fossil IV, 2010
Photo: Ester Segarra

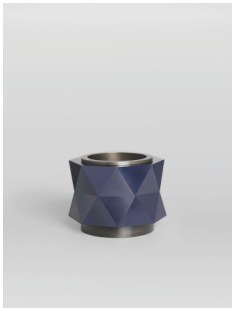
Sarah Blood is a mixed media artist whose work combines the density of materials such as concrete and clay with the perceived fragility of glass, inert gas, and light. Blood creates sophisticated and elegant works that question definitions of strength and permanence. With 18 years experience in glass, Sarah is a skilful maker and knowledgeable in the specialisms of casting, fusing, cold work, flame-working and neon. Blood excels in the combining of neon and mixed media including ceramics, wood, paper and audio. www.sarahblood.com



*The National Film School,
Ireland, 2013*
Photo: Christian Richters

Kirsty Brooks studied architectural glass and painting at Edinburgh College of Art. Initially creating layered composites from stained glass with blown and kiln formed elements, her work has evolved to encompass photography, screen printing and digital manipulation. Recent commissions include building façades for the National Film School in Ireland and The Novium Museum in Chichester; exterior glass artworks for the seafront in Bridlington and the dock development in Baku, Azerbaijan; balustrades for the Grand Opera House in Belfast and restaurant screens for St Pancras Hotel in London. www.axisweb.org/artist/kirstybrooks

continued...



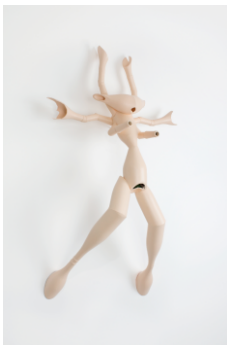
Blue Triangles, 2013
Photo: Robert Hall

Anna Dickinson creates beautiful one off objects in glass and metal that are both aesthetically pleasing and technically demanding. Exploration is a key element and fundamental to Anna's creative process as she shifts from monochrome blown glass to cast and cut pieces. The nature of Anna's inspiration has evolved from exotic textures and colours to her immediate environment. To create something new and interesting on a regular basis gives Anna tremendous satisfaction and is her driving force. www.barthacontemporary.com/adickinson/works.html



Affinity, 2009
Photo: Gavin Wilkinson

Shirley Eccles' approach to glass is explorative and intuitive. She is interested in the unexpected relationship between different materials. The solidity, yet fragility and sensuousness of glass are metaphors for the inconsistencies and questions of everyday life. Shirley explores memory, history and the past: the presence of human interaction with the object is juxtaposed to become contemplative. The play between reflected light, the translucent glass and the shadows it casts, creates ambiguity and performs an important role in the work. www.shirleyecclesglassartist.co.uk



Sister, 2009
Photo: Annie Smith

Emma Woffenden trained as a glassmaker and has made work using most glass techniques. Her practice involves many different materials and sometimes she mixes them together; it can be objects, sculpture or installation. The work often references the body as a physical and psychological site. Emma exhibits and lectures internationally. Beside her studio practice she collaborates with her partner designer Tord Boontje and is currently artistic director for North Lands Creative Glass. Emma's latest exhibition, *Falling Hard*, runs from 15 May - 24 June 2014 at the Marsden Woo Gallery, 17-28 Great Sutton Street, London EC1V 0DN. emmawoffenden.com

TICKETS: £25.00 or £22.50 if booked prior to 14 September 2014

FOR FURTHER INFORMATION AND BOOKING - www.just-glass.co.uk

PRESS: Telephone: Su Herbert 020 8748 7704 justglassociety@gmail.com

Just Glass
www.just-glass.co.uk

END